



# Thriving Communities Grantmaking Program EPA Region 3

---

**GHHI's EPA Region 3  
Environmental Justice  
Thriving Communities Grantmaking Program**  
*October 21, 2024*

---

# Session Objectives

- Introduce Green & Healthy Homes Initiative
- Introduce the Thriving Communities Grantmaking Program
- Preview available funding for grassroots and community-based organizations
- Hear feedback on how to best promote the funding opportunity to reach and support eligible applicants, especially those working in historically marginalized and disinvested communities on environmental justice issues

---

# Green & Healthy Homes Initiative (GHHI)

---

# Green & Healthy Homes Initiative (GHHI)

GHHI is dedicated to addressing the social determinants of health and the advancement of racial and health equity through the creation of healthy, safe and energy efficient homes.



---

# Accomplishments



\$650 million raised and +45 pieces of legislation passed to support health and equity in housing.



Architect of the most health protective lead laws in the nation, leading to a 99% reduction in lead poisoning in Maryland. Policies have been replicated around the country.



Leading healthy housing convener at the local (over 75 partnering jurisdictions), state and national levels.



Field leader in alignment of housing with other sectors such as healthcare, energy, and education.



National leader in innovative financing models for healthy homes including designing the first Pay for Success model with Medicaid paying for outcomes.



Leading healthy homes programs contracted by Medicaid MCOs and ACOs. Supports other contracted programs by demonstration of Medicaid and Hospital Community Benefits investments.



# GHHI's Whole-House Model

Comprehensive, integrated resident education, assessment, and housing interventions



**Hazard Recognition, Risk Assessment, Risk Management, and Phased Scope of Work to Address Multiple Intervention Needs:**

- › Lead-based paint hazards
- › Asthma triggers (Mold, pests, VOCs)
- › Injury hazards (Falls, fire, poisoning, etc.)
- › Radon and asbestos hazards
- › Energy efficiency/weatherization issues
- › Electrification/decarbonization
- › Housing rehabilitation



**Conducted by cross-trained housing assessors, educators, and contractors addressing housing issues holistically**

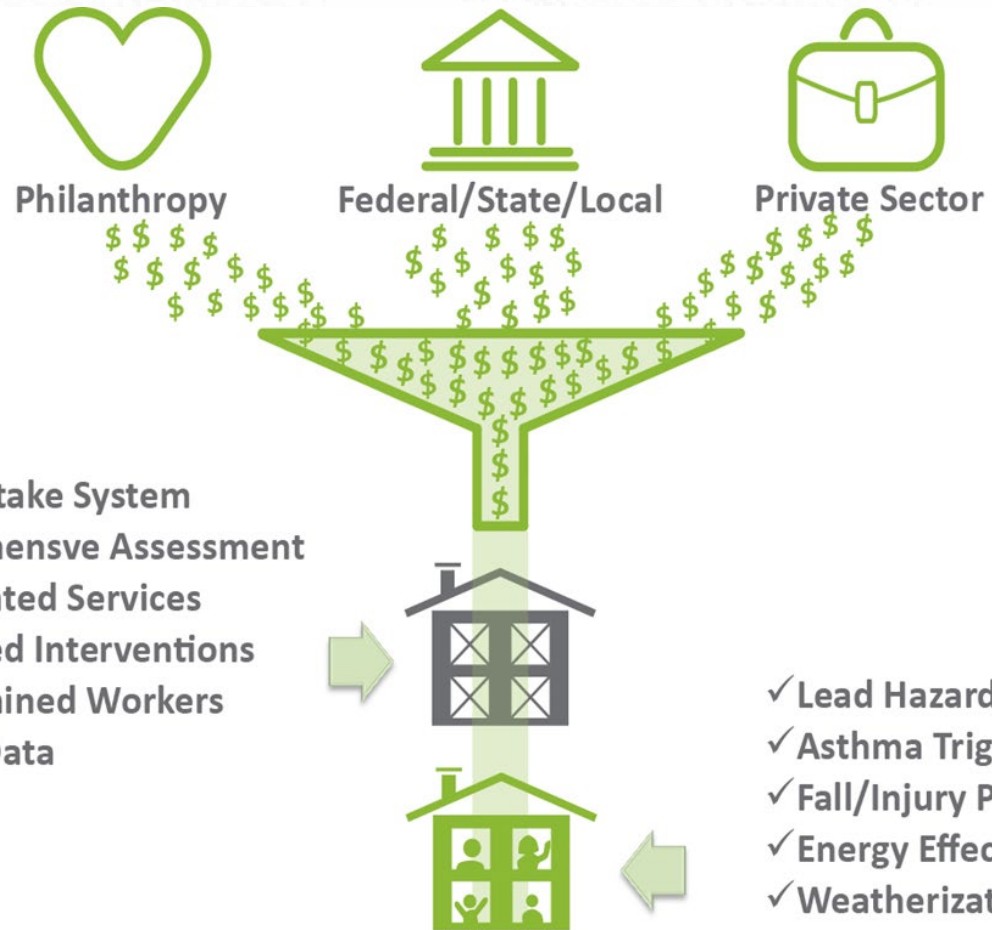
# GHHI Model: Aligning Resources to Advance Holistic Retrofits

**Align**  
Services & funding

**Braid**  
Relevant resources

**Coordinate**  
Service delivery

- Single Intake System
- Comprehensive Assessment
- Coordinated Services
- Integrated Interventions
- Cross-Trained Workers
- Shared Data



---

**GHHI's EPA Region 3  
Thriving Communities  
Grantmaking Program**



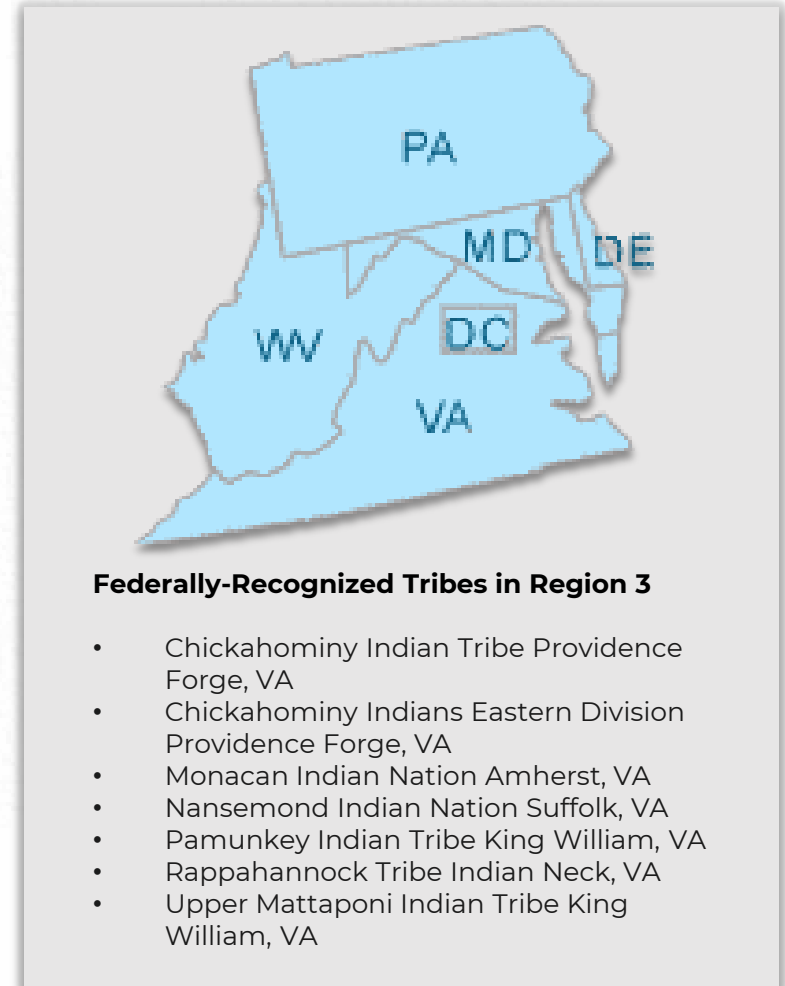
# EPA Environmental Justice Thriving Communities Grantmaking (TCGM) Program

- Purpose: Reduce barriers and make it easier for small, community-based organizations to access federal environmental justice funds.
- \$600 million from Inflation Reduction Act (IRA), the largest investment in climate action in history.
- 11 grantmakers covering all EPA regions to distribute thousands of grants over 3 years.



# GHHI's Thriving Communities Grantmaking Program

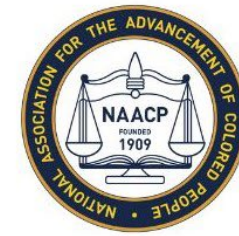
- \$40 million to grant approximately **171 eligible environmental justice grant projects** benefitting disadvantaged communities in EPA's Region 3
- Program staff and **TA Provider partners** with subject matter expertise to support applicants and grantees



# GHHI's TCGM Advisory Board

## Organizations will:

- Outreach & applicant engagement
- Program design
- Ensure equitable & transparent grant awarding & project implementation processes



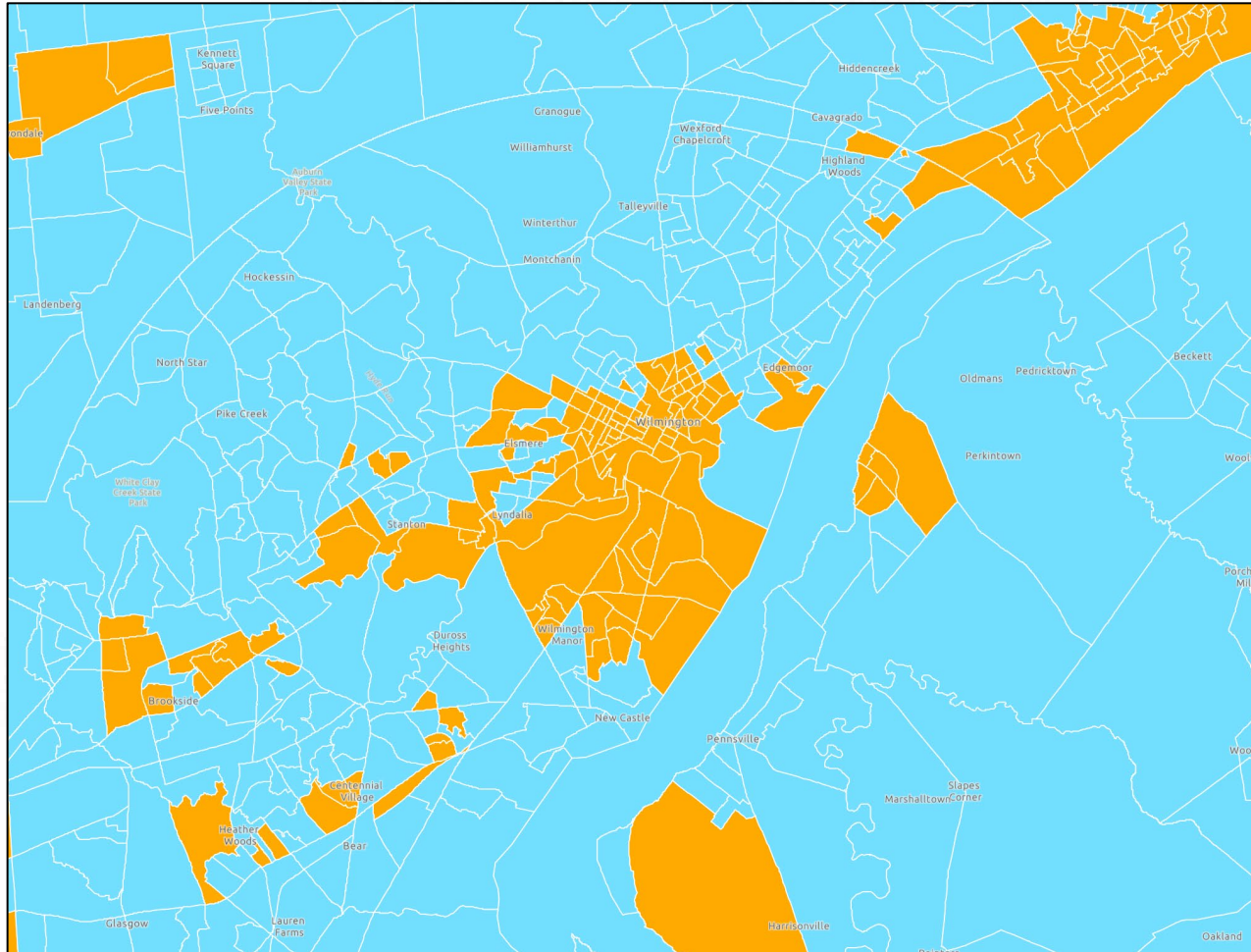
---

# Purpose of the Thriving Communities Subgrants

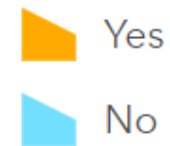
| Focus  | Strengthen  | Connect   | Catalyze  |
|--|---|---|---|
| <p><b><u>Focus resources</u></b> to benefit communities disproportionately affected by environmental, climate, and human health harms and risks.</p> | <p><b><u>Strengthen the capacity</u></b> of local grassroots and community-based organizations.</p> | <p><b><u>Connect community-based organizations with support and TA</u></b> advance community-driven projects to address local environmental justice issues.</p> | <p><b><u>Catalyze</u></b> disadvantaged and underserved communities into healthy, thriving communities.</p> |



# Focus: Grants to realize benefits for communities overburdened and underserved



## EPA IRA Disadvantaged Communities



Source:  
<https://ejscreen.epa.gov/mapper/>

---

# Eligible Applicants (must be in EPA Region 3)

- Nonprofit organizations
- Tribal governments (both federally and state recognized) and intertribal consortia
- Native American organizations (includes Indian groups, cooperatives, nonprofit corp., partnerships, and associations)
- Local governments
- Institutions of higher education

---

# Grantmaking Focus: Possible EJ Issues

- Community-led air and other pollution monitoring, prevention, and remediation, and investments in low- and zero emission and resilient technologies and related infrastructure
- Monitoring of effluent discharges from industrial facilities
- Water quality & sampling
- Improving food access to reduce vehicle miles traveled
- Stormwater issues and green infrastructure
- Lead and asbestos contamination
- Pesticides and other toxic substances
- Healthy homes that are energy/water use efficient and reduce indoor toxics and indoor air pollution
- Illegal dumping activities, such as education, outreach, and small-scale clean-ups
- Small cleanup projects
- Mitigating climate and health risks from urban heat islands, extreme heat, wood heater emissions, and wildfire events
- Workforce development that helps reduce greenhouse gas emissions and other air pollutants
- Environmental justice training for youth
- Climate resiliency and adaptation
- Facilitating engagement of disadvantaged communities in State and Federal advisory groups, workshops, rulemakings, and other public processes

**+ Other community-driven environmental justice priorities**

---

# Grantmaking Summary

---

| Tier | Award Focus                       | Expected Number | Grant Amount | Award Period |
|------|-----------------------------------|-----------------|--------------|--------------|
| I    | Assessment projects               | 60              | \$150,000    | 1 year       |
| II   | Planning projects                 | 51              | \$250,000    | 1-2 years    |
| III  | Implementation projects           | 50              | \$350,000    | 2 years      |
| N/A  | Non-competitive capacity building | 10              | \$75,000     | 1 year       |

---



# Examples of Project Activities, by Tier

## Tier I Assessment 1 year \$150,000

- Sampling
- Testing
- Monitoring
- Investigation
- Surveys and studies
- Public education
- Project design research

## Tier II Planning 1-2 years \$250,000

- Planning
- Community engagement
- Partnership building
- Public outreach and education
- Trainings
- Small land purchase and acquisition (less than 50% of award)

## Tier III Development 2 years \$350,000

- Implementation of project plans
- Development
- Blueprints, Plans, Technical development
- Obtaining permits for EJ project
- Small land purchase and acquisition (less than 50% of award)

---

## Noncompetitive Grants: 1 year, \$75,000

- Expected to be **10 noncompetitive** awards for severely capacity constrained entities
- Criteria and selection process will be developed by GHHI and the Advisory Board
- Not managed through this RFA process

---

# Project Support for Awardees

## **GHHI Program Officer assigned to each awardee to support:**

- Compliance
- Drawing funds
- Facilitating Technical Assistance
- Refinement of Grantee Work Plan
- Reporting
- Other requirements related to federal grants

## **Technical Assistance provided by:**

- GHHI staff
- Core TA partners
- Region 3 TCTAC
- TC national grant maker team
- Outside experts, based on program needs

TA can be for capacity building support or to help advance specific environment justice goals.

---

# GHHI's TCGM Core TA Partners



**VPLC**  
Virginia Poverty  
Law Center





---

# Request for Applications

---

# Request for Applications (RFA) Timeline



Applications for all three tiers will be rolling submission



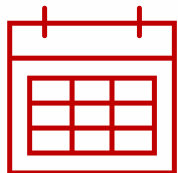
RFA portal is open



No more than **two** applications may be submitted by each lead organization

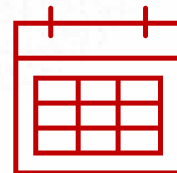
## Submission Deadlines

**November 30, 2024**



2-year award submissions

**April 30, 2025**



1-year award submissions

---

# Application Materials

**Vision: Transparent, low-barrier application, with optional templates and limited questions.**

- Online platform for submissions (preferred) or mail-in option.
- Expectation is that the application can be completed in 4 to 8 hours, including up to an hour for the budget and up to an hour for the work plan.
- Supports for applicants throughout the process.

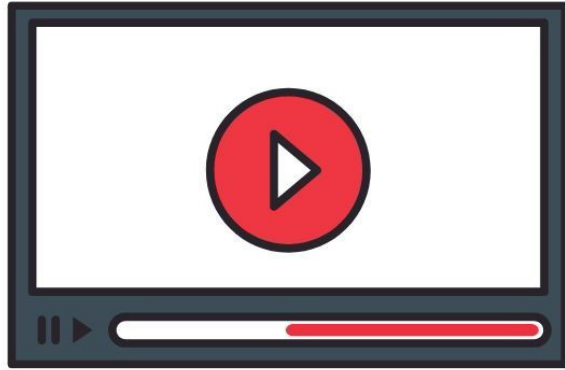
---

# Application Materials

|                            |  |
|----------------------------|--|
| <b>Narrative Proposal</b>  | Community need, proposed project, organizational capacity & TA needs, project evaluation process. (No more than 7 pages)                             |
| <b>Budget</b>              | Optional template will be provided.  |
| <b>Work Plan</b>           | Optional template will be provided.  |
| <b>Financial Statement</b> | Most recent statement. Tier I applicants without a financial statement can submit a document explaining how the project will be financially managed. |
| <b>A-133 Audit</b>         | Most recent A-133 audit, if applicable.  |

---

# Optional Materials



2 to 3 minute video about the project or highlighting the need for the project



Up to 3 additional project-related documents, such as case studies, project logic model, or news articles



Up to 3 letters of commitment from partnering entities' leadership



---

# Office Hours for Applicant Support

**Purpose: The office support hours will be to provide information or resources to applicants during their application formulation period.**

- The office hours will be offered twice a week and will be posted on GHHI's Thriving Communities website.
- The session will require pre-registration with limit to one query per organization submitted during registration.
- The session will be capped to 15 attendees.
- The session **WILL NOT** be used for project brainstorming/ideation.

# Application Scoring

| Application Element               | Max Points | Suggested Page Length |
|-----------------------------------|------------|-----------------------|
| Community Need                    | 20         | 1 to 2 pages          |
| Project Description               | 30         | 2 pages + Workplan    |
| Organizational Capacity and Needs | 30         | 2 pages               |
| Evaluation Plan                   | 10         | 1 page                |
| Budget                            | 10         | Budget worksheet      |

---

# Review Process

**GOAL: Ensure time between application submission, review, award, and under agreement is no more than three months.**

- Applications will be checked for completion and that threshold criteria are met (e.g., required materials provided, entity eligibility, etc.) within 15 days of receipt.
- Eligible applications moving to full review will be completed within 1.5 months.
- A debrief may be requested for non-awarded projects. Applications **may be resubmitted once**, if it is prior to the application deadline.
  - 2 Year Grants (Tier II or III):
    - The resubmission window has passed for 2-year projects that have completed the full review process.
    - Applicants who did not passed the threshold review may resubmit once before the application deadline. Note: Application deadline is November 30, 2024.
  - 1 Year Grants (Tiers I or II): Applications for 1-year projects can be resubmitted once prior to the April 25, 2025, deadline.

---

# Application Announcement & Assistance

## **GHHI's Thriving Communities Website:**

[www.greenandhealthyhomes.org/thrivingcommunities/](http://www.greenandhealthyhomes.org/thrivingcommunities/)

- Sign up for updates
- Request for Applications & Grants Portal
- Frequently Asked Questions
- Applicant Webinars
- Available Office Hours
- Please submit inquiries to [ThrivingCommunities@ghhi.org](mailto:ThrivingCommunities@ghhi.org).

---

# Thriving Communities Technical Assistance Center (TCTAC) for Region 3

The **National Wildlife Federation**, the **University of Maryland**, and other partners awarded \$12 million by EPA to provide TA throughout the region.

## Primary objectives:

1. Outreach to underserved, overburdened, rural, and capacity constrained communities to receive TA.
2. Capacity-building for environmental and energy justice assessment.
3. Capacity-building and direct assistance in grant writing techniques and financing.
4. Capacity-Building and direct assistance to engage policy-makers, government, business, and industry in decision-making to address environmental and energy injustices.

**Region 3 TCTAC is a resource for potential applicants.**

[www.nwf.org/Our-Work/Environmental-Justice/Region-3-TCTAC](http://www.nwf.org/Our-Work/Environmental-Justice/Region-3-TCTAC)

1-202-792-5350 or 1-800-757-1405





## Thriving Communities Grantmaking Program EPA Region 3

# For further information

### Thriving Communities Contact

[ThrivingCommunities@ghhi.org](mailto:ThrivingCommunities@ghhi.org)

Call us at 443-687-7343

### Thriving Communities Webpage

<https://www.greenandhealthyhomes.org/thrivingcommunities/>

- Request for Applications & Grants Portal
- FAQ & PPT Presentation
- Upcoming, Events/Webinars & Office Hours

### EPA EJ Screen Tool

[Learn to Use EJScreen | US EPA](#)

EPA United States Environmental Protection Agency

Search EPA.gov

Environmental Topics ▾ Laws & Regulations ▾ Report a Violation ▾ About EPA ▾

EJScreen: Environmental Justice Screening and Mapping Tool CONTACT US

EJScreen Home

Launch the EJScreen Tool

Tool Basics and Uses

**Learn to Use EJScreen**

EJScreen Office Hours and Trainings

How to Interpret EJScreen Data

Example of an EJScreen Community Report

Threshold Maps

### Learn to Use EJScreen

EJScreen is intended for use by a range of audiences: EPA partners and grantees, scientists, educators, students, planners, health professionals, community advocates, and anyone else. Explore our educational materials or join a [live training](#) to see how you can use EJScreen!

**On this page:**

- [Introductory](#)
- [Understanding EJScreen Results](#)
- [Advanced Features](#)



Green & Healthy Homes Initiative®

---

# Q & A



Thriving Communities  
Grantmaking Program  
EPA Region 3

---

**Thank you!**